

# KX-NCP500/1000

## Converged IP-PBX Phone System



### System Capacity

#### Maximum CO Capacity

	NCP500	NCP1000
Total number of CO Line	60	84
Analog/PRI/T1	52	52
IP (H.323/SIP trunk)	8	32

#### Maximum Terminal Equipment

	64(68)	104(108)
Telephone (Digital Extra Device Port)	64(68)	104(108)
Single Line Telephone	20	36
KX-T7600 series (DPT), DT300 series <sup>1</sup>	24	40
Other Digital Proprietary Telephone	6	10
Analog Proprietary Telephone	4	4
IP Proprietary Telephone	40	64
SIP Phone	32	64
Direct Station Selection Console	8	8
Cell Station	4	8
High-Density Cell Station	2	4
Wireless phone (portable station)	64	64
Voice Processing System	2	2
Doorphone	16	16
Door Opener	16	16
External Sensor	16	16
External Relay	16	16

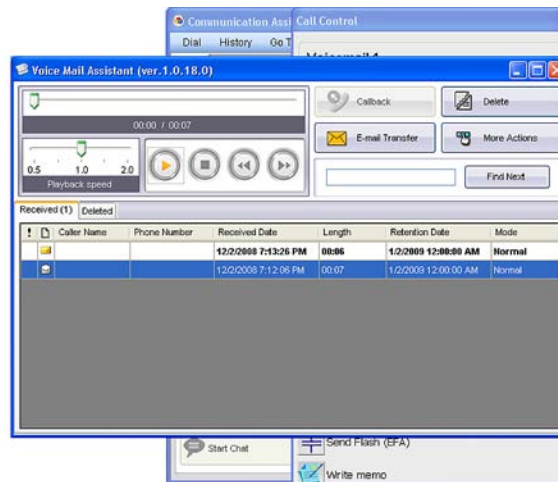
<sup>1</sup> DT300 series will be launched in 2009.

## 5 Competitive Advantages

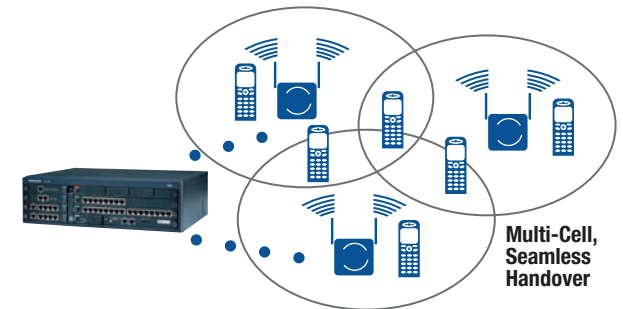
**Network Communications Platform (NCP) helps you cut communication costs and be more productive with many advantages for the end user:**

- Integration with Professional Voice Mail System (KX-TVA series), built-in voice messaging and Automated Attendant functionality
- Mobility application supporting mobile phones as office extensions
- Multi-Cell wireless integration with 8 cell stations and 64 handsets  
**NEW:** Experience greater clarity, security and reduced interference with our latest line of DECT 6.0 wireless phones.
- Built-in desktop application- Communication Assistant for call management and more
- Built-in support for advanced IP extensions as well as SIP telephony (integrated with SIP trunking providers). Supports remote workers and remote offices.







**NCP works with Communication Assistant which includes Voice Mail Assistant, and supports wireless telephone integration.**



**Communication Assistant – intuitive PC-based application suite which includes voicemail integration**



**NCP supports Wireless Telephone Integration**

Phone Type	IP Proprietary Phones				IP Softphone	Wireless Phones (DECT 6.0)		
<b>KX-NCP500/1000</b> <b>Converged IP-PBX Phone System</b>	KX-NT366	KX-NT346	KX-NT343	KX-NT321	KX-NCS32XX <sup>1</sup>	KX-TD7695	KX-TD7685	KX-TD7696
								
						Compact	Standard	NEW: Ruggedized
Display(LCD) Lines/Characters	6/24	6/24	3/24	1/16	6/24	6/16	6/16	6/16
LCD Backlit	Yes	Yes	Yes	Yes	-	Yes	Yes	Yes
Headset Jack	Yes	Yes	Yes	Yes	on PC	Yes	Yes	Yes
Message Waiting LED	Yes	Yes	Yes	Yes	Yes	Yes (Display)	Yes (Display)	Yes (Display)
Speakerphone	Digital Duplex	Digital Duplex	Digital Duplex	Yes	on PC <sup>2</sup>	Digital Duplex	Digital Duplex	Digital Duplex
Personal Speed Dial	100	100	100	100	100	100	100	100
Alphanumeric Operation	Yes	Yes	Yes	Yes	Yes	Yes	Yes	Yes
Call Log (Incoming)	10(100 Max)	10(100 Max)	10(100 Max)	10(100 Max)	10(100 Max)	10(100 Max)	10(100 Max)	10(100 Max)
Call Log (Outgoing)	5(100 Max)	5(100 Max)	5(100 Max)	5(100 Max)	5(100 Max)	5(100 Max)	5(100 Max)	5(100 Max)
Function Button	48(12x4)	24	24	8	48	Yes*	Yes*	Yes*
Interface for CTI (1st party)	PC LAN Port	PC LAN Port	PC LAN Port	PC LAN Port	-	-	-	-
Add-on Key Module/DSS Console	-	Yes	Yes	-	-	-	-	-
Bluetooth Module	Yes	Yes	Yes	-	-	-	-	-
Self Labeling	Yes	-	-	-	-	-	-	-
Digital Extra Device Port	-	-	-	-	-	Wireless XDP	Wireless XDP	Wireless XDP
Navigation Key	Yes	Yes	Yes	Yes	Yes	Yes	Yes	Yes
Ringer Tone/Melody	30	30	30	10	4	15+ vibration	15+ vibration	15+ vibration
Wall Mounting	Yes	Yes	Yes	Yes	-	Yes (Charger)	Yes (Charger)	Yes (Charger)
Color	Black/White	Black/White	Black/White	Black/White	-	Silver	Silver	Black
IP54	-	-	-	-	-	-	-	Yes

\* Soft buttons on LCD

## Additional Phones in the Line-Up

### Advanced Digital Phones

**KX-T7630:** Digital Telephone with 24 Buttons, 3-Line LCD and Speakerphone

**KX-T7633:** Digital Telephone with 24 buttons, 3-line backlit LCD and Speakerphone

**KX-T7636:** Digital Telephone with 24 Buttons, 6-line Backlit LCD and Speakerphone

**KX-T7667:** Digital Telephone with 12 buttons, 1 line LCD and Speakerphone

### Conference Speakerphone

**KX-NT700:** Conference Speakerphone PoE,

SD card slot for recording.

PSTN, IP, TDE/NCP-SIP extension,

Cordless Phones Connectivity.



### SIP Phones

**KX-HGT100-B:** SIP Telephone with 2 line LCD and 2nd LAN port

### IP Phones

**KX-NT265 v.2:** IP Telephone with 8 Buttons, 1-Line Backlit LCD and Speakerphone

### 2.4 GHz Wireless Phones

**KX-TD7684:** 2.4 GHz Multi-Cell Wireless System Telephone

**KX-TD7690:** Premium (Compact, Slim & Lightweight, with Function Keys)

2.4 GHz Multi-Cell Wireless System Telephone

**KX-TD7694:** Compact 2.4GHz Multi-Cell Wireless System Telephone

### KX-TVA50 Voice Mail System

By adding a KX-TVA series voice processing system, calls can be easily managed by using the built-in automated attendant service, voice mail with email integration, and more.

- 2 - 6 Ports and 64 Mailboxes
- 4 - 8 Hour System Recording Time
- Email integration (send wav file by email)

### KX-TVA200 Voice Mail Cabinet

The KX-TVA200 is a voice processing system that supports both voice mail and automated attendant services.

- 4 - 24 Ports and 1024 Mailboxes
- Automated Attendant
- 1000 Hour System Recording Time (hard drive)
- Email Integration

<sup>1</sup> IP Softphone keys include the KX-NCS3201 (1 user key), KX-NCS3204 (4 user), KX-NCS3208 (8 user), and KX-NCS3216 (16 user).

<sup>2</sup> USB Speakerphone KX-TS710 is an option which can be used with a PC.